

# Master's in Data Analytics for Government

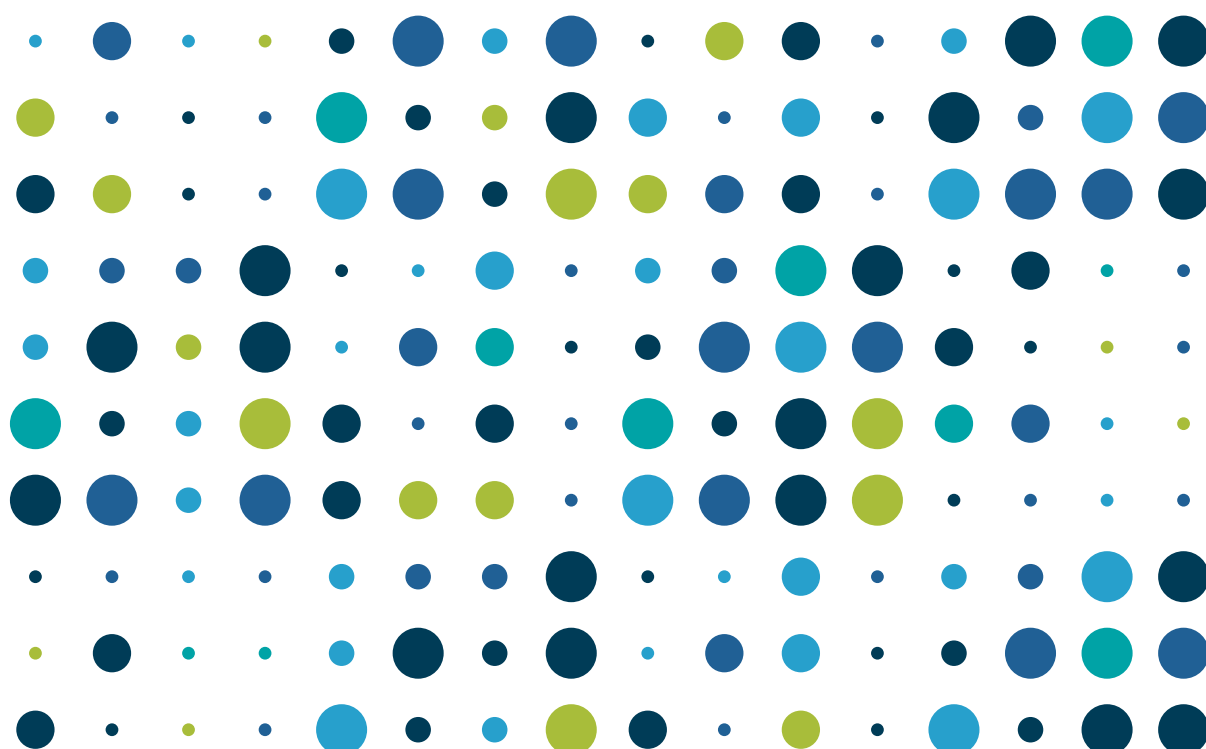
## Guidance for applying for the Master's (MSc) in Data Analytics for Government (MDataGov)

Office for National Statistics (ONS) Data Science Campus  
Advanced Collaborative Programmes

Created on 9 July 2023

Updated on 13 September 2023

An [accessible version of this guidance document](#) is available in HTML format. If you have any accessibility issues or questions, contact the ONS Data Science Campus communications team.



# Contents

- Applying to study..... 2**
- MDataGov applicant checklist..... 2**
- Cardiff University ..... 3**
  - Standalone CPD modules.....3**
    - How to apply: ..... 3
  - Full MSc.....3**
    - How to apply: ..... 4
- University of Glasgow ..... 4**
  - Standalone CPD modules.....4**
    - How to apply: ..... 4
  - Full MSc.....4**
    - How to apply: ..... 4
- Oxford Brookes University ..... 5**
  - Standalone CPD modules.....5**
    - How to apply: ..... 5
  - Full MSc.....5**
    - How to apply: ..... 5
- University of Southampton ..... 6**
  - Standalone CPD modules.....6**
    - How to apply: ..... 6
  - Full MSc.....6**
    - How to apply: ..... 6

## Applying to study

This guidance provides information on applying for the programme, including CPD modules, at each of our partner universities. To access information most relevant to you, please:

1. Read the section of the document for the university that you are applying to:
  - [Cardiff University](#)
  - [University of Glasgow](#)
  - [Oxford Brookes University](#)
  - [University of Southampton](#)
2. Complete the [MDataGov applicant checklist](#) before submitting your application.

The answers to most applicant questions can be found in this document. If you can't find the information you need, please contact your chosen university directly or email the [Advanced Collaborative Programmes team](#) in the Office for National Statistics (ONS) Data Science Campus.

We wish you the very best with your application and studies!

## MDataGov applicant checklist

Please ensure that you can tick off each of the following before submitting your application:

- Are you aware of the mode of delivery (e.g., online, in-person) and time commitment of your chosen course? If unsure, links to each of our university partners can be found on the [ONS Data Science Campus website](#)
- Do you meet the prerequisites for this course (i.e., the required knowledge and qualifications/experience) as described in the university's module information?
- Have you obtained approval from your line manager to take this course? If not, are you aware of the number of hours required to complete this course in your personal time? Please direct your line manager to the [MDataGov guidance for managers](#) for more information on the benefits of the programme and ways to support you through it.
- Have you checked the course fees for the course you are interested in? If taking a standalone module, please check that you have the correct fee information based on the number of credits for your module.

## Master's in Data Analytics for Government

- Has funding for this course been approved (unless you are self-funding). If not, please read the [guidance on funding your study](#).
- If you are being sponsored by your organisation, are you aware of your chosen university's requirements for applicants to prove their sponsorship status during the application process? If not, you can find this information in the relevant section of this guidance.

# Cardiff University

## Standalone CPD modules

Modules are delivered in-person and the application window per academic year is from June to early September. [Cardiff University website](#) contains information on modules, admissions criteria and requirements for those wishing to accumulate credits towards full MSc. It is expected that all students will complete the assessments for each module.

### How to apply:

- Apply via the [university website](#)
- Read the [guidance notes](#) on how to complete the online application
- If you wish to continue your studies, you will need to re-apply every year

### Sponsored students

At the time of application, you will need to upload the following documents within the Personal Statement section. Please request these from your sponsor in advance:

- Sponsorship letter
- Purchase Order (PO) document

## Full MSc

The programme is delivered in-person on a full-time or part-time basis, offered via a new flexible delivery route from September 2023. A postgraduate diploma (PgDip) or postgraduate certificate (PgCert) are offered as alternatives to the full MSc. [Cardiff University website](#) contains information on the full programme, including admissions criteria.

## How to apply:

Apply via the [university website](#).

### Sponsored students

At the time of application, you will need to upload the following documents within the Personal Statement section. Please request these from your sponsor in advance:

- Sponsorship letter
- Purchase Order (PO) document

## University of Glasgow

### Standalone CPD modules

Modules are delivered online over the standard academic semesters and application deadlines are typically 3-4 weeks before the module start date. The [University of Glasgow website](#) contains information on modules, admissions criteria, and the difference between studying 'For credit' (assessed) or 'Not for credit' (unassessed).

## How to apply:

Apply via the [university website](#).

### Sponsored students

Read the [guidance notes](#) on what should be included in your award letter and what you will need to provide during financial registration. Please request your award letter from your sponsor in advance.

### Full MSc

The programme is delivered online on a part-time basis. A postgraduate diploma (PgDip) or postgraduate certificate (PgCert) are offered as alternatives to the full MSc. The [University of Glasgow website](#) contains information on the full programme, including admissions criteria and online information sessions for prospective students.

## How to apply:

Apply via the [university website](#).

## Sponsored students

Read the [guidance notes](#) on what should be included in your award letter and what you will need to provide during financial registration. Please request your award letter from your sponsor in advance.

# Oxford Brookes University

## Standalone CPD modules

Modules delivered in-person over the standard academic semesters, with recordings of most sessions available to allow for remote attendance. The [School of Engineering, Computer and Mathematics microsite](#) contains information on modules and assessed and non-assessed study.

### How to apply:

- Apply via the [university website](#) to study a module with assessment
- Contact the [university team](#) to apply on a non-assessed basis

## Sponsored students

At the time of application, you will need to provide a Purchase Order (PO) number. Please request this from your sponsor in advance.

## Full MSc

The programme is delivered in-person on a part-time basis, with recordings of most sessions available for students who cannot travel to site. Students are required to attend the university for any in-class assessments. A postgraduate diploma (PgDip) or postgraduate certificate (PgCert) are offered as alternatives to the full MSc. The [Oxford Brookes University website](#) contains information on the full programme, including admissions criteria.

### How to apply:

Apply via the [university website](#).

## Sponsored students

At the time of application, you will need to provide a Purchase Order (PO) number. Please request this from your sponsor in advance.

# University of Southampton

## Standalone CPD modules

Modules are delivered in-person as one-week blocks of intensive study and application deadlines are typically 4 weeks before the module start date. The [Southampton Statistical Sciences Research Institute website](#) contains the module schedule and application form.

### How to apply:

Send your completed [application form](#) to the email address provided.

### Sponsored students

At the time of application, you will need to provide a sponsorship letter, with Purchase Order (PO) number. Please request this letter from your sponsor in advance.

## Full MSc

The programme is delivered in-person on a part-time or full-time basis. The [University of Southampton website](#) contains information on the full programme, including module contents and admissions criteria.

### How to apply:

Apply via the [university website](#).

### Sponsored students

At the time of application, you will need to provide a sponsorship letter, with Purchase Order (PO) number. Please request this letter from your sponsor in advance.